

Phase: Key Stage 1

Subject: Science

Focus: Plants

Term: Summer 1 & 2

What I should already know?

- Plants are a large group of living things.
- There are many different kinds of plants.

Vocabulary

Bulbs	Bulbs grow into new plants.
Flowers	Flowers attract insects and birds.
Fruit	Fruit contains the plant's seeds. Sometimes humans try to grow fruit without seeds because it's easier to eat.
Leaves	Leaves catch sunlight to help the plant make its own food.
Petals	Petals are the colourful part of the flower.
Roots	Roots take in water and nutrients from the soil and keep the plant in the ground.
Seeds	Seeds grow into new plants
Stem	The stem holds the plant up and carries the water and nutrients from the roots to the leaves and flowers.
Wild plants	A wild plant seed grows where it falls. It doesn't need to be planted or cared for as it grows.
Garden plants	Garden plants are plants that people choose to grow in their gardens.
Weeds	Weeds are wild plants that grow in places where people don't want them.
Deciduous	A deciduous tree loses its leaves each year. evergreen
Evergreen	An evergreen tree keeps its green leaves all year round, even in the winter.

Knowledge

Wild Plants



Garden Plants



Trees



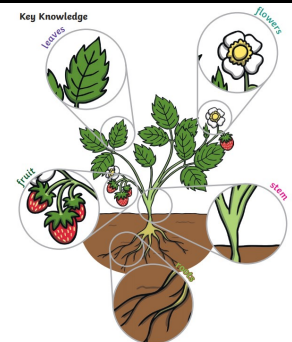
By the end of the unit I should know...

Plants can be grouped into different groups- wild plants, garden plants and trees.

Plants begin to grow in the Spring.

Some trees lose their leaves every year.

Others keep them all year round. These are called evergreen.



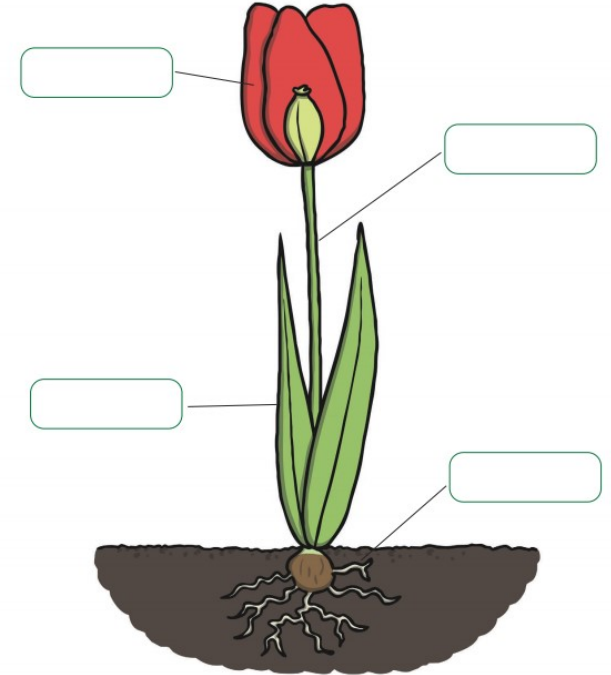
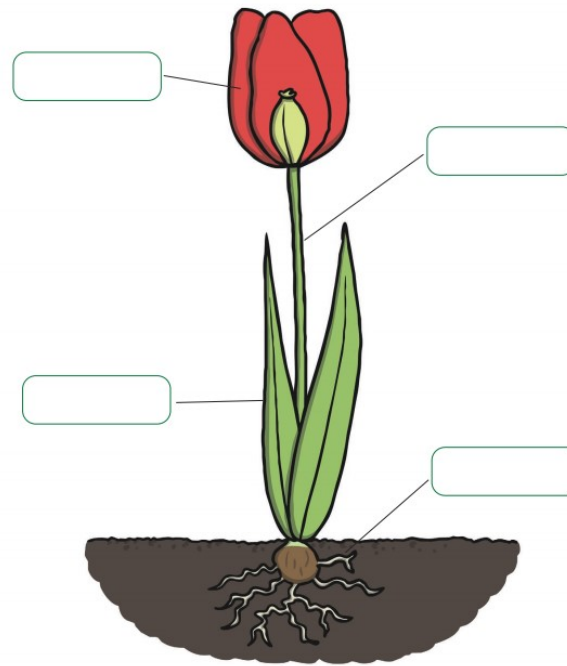
<u>Question 1</u> What do the leaves on a plant do?	<u>Start of Unit</u>	<u>End of Unit</u>
Make it look nice and pretty.		
Help the plant to stand up.		
Make food for the plant.		
Don't know		

<u>Question 2</u> What do the roots of a plant do?	<u>Start of Unit</u>	<u>End of Unit</u>
Suck up water from the soil to feed the plant.		
Make a plant grow tall.		
Don't know		

Question 3 Can you label the parts of a flowering plant?

Start of unit:

End of unit



What I would like to find out?

Answers to my questions...